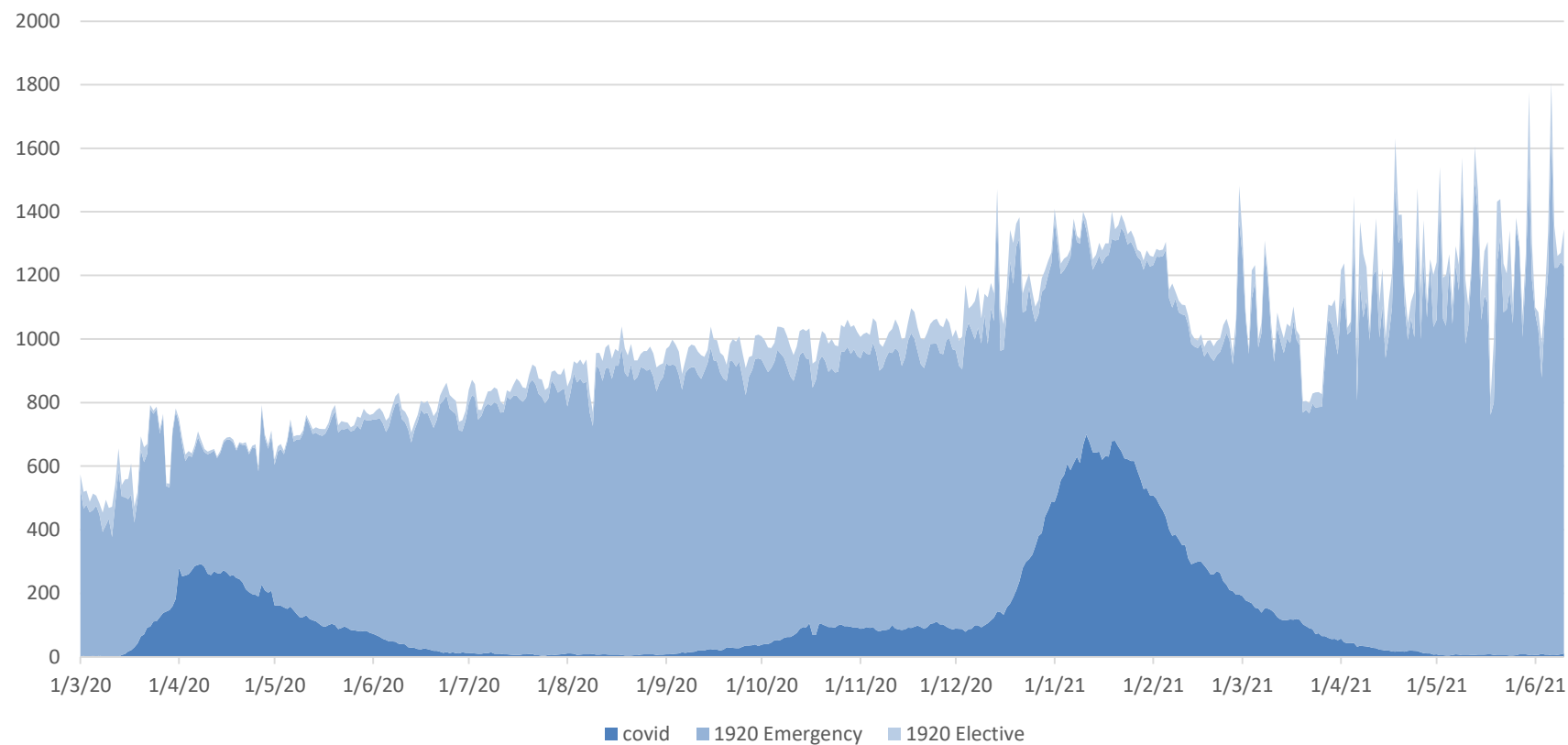


## Covid-19 Impact

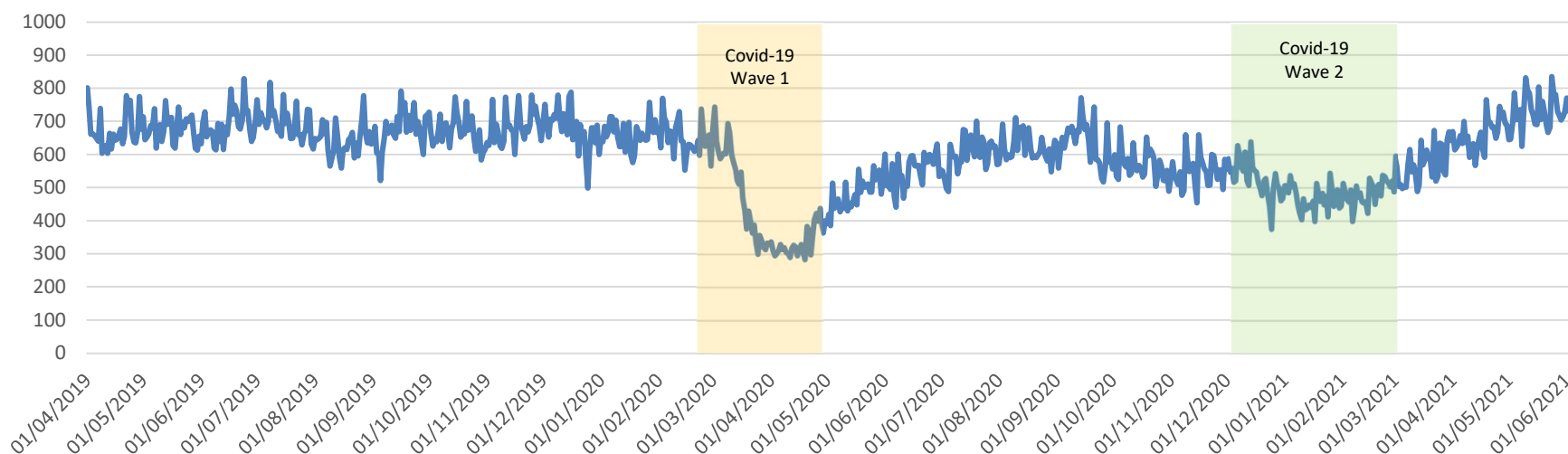
- Covid-19 positive inpatients in the Trust remain low – routinely less than 10
  - Starting to see an increasing number of patients and staff testing positive for Covid-19 as community incidence rises although overall numbers remain low (<1000 / 100K as opposed to over 1000 in Jan / Feb)
- FHFT staff continue to wear appropriate PPE at all times and surgical masks in all areas unless occupying an office or other area alone
- Visitors and patients are asked to wear appropriate face coverings/surgical masks whenever possible
- Patient visiting now re established with strict IPC process
- Internal 'test and trace' process continues in line with PHE guidance
- Twice weekly lateral flow testing for patient facing staff continues
- Covid-19 vaccination uptake by FHFT 91% for first dose and 84% second dose

## FHFT Activity



- Significant increase of Covid-19 in community over recent weeks.
- Covid-19 inpatient cohort remains low
- Unprecedented impact on capacity and flexibility of acute sites – prolonged impact on recovery work.

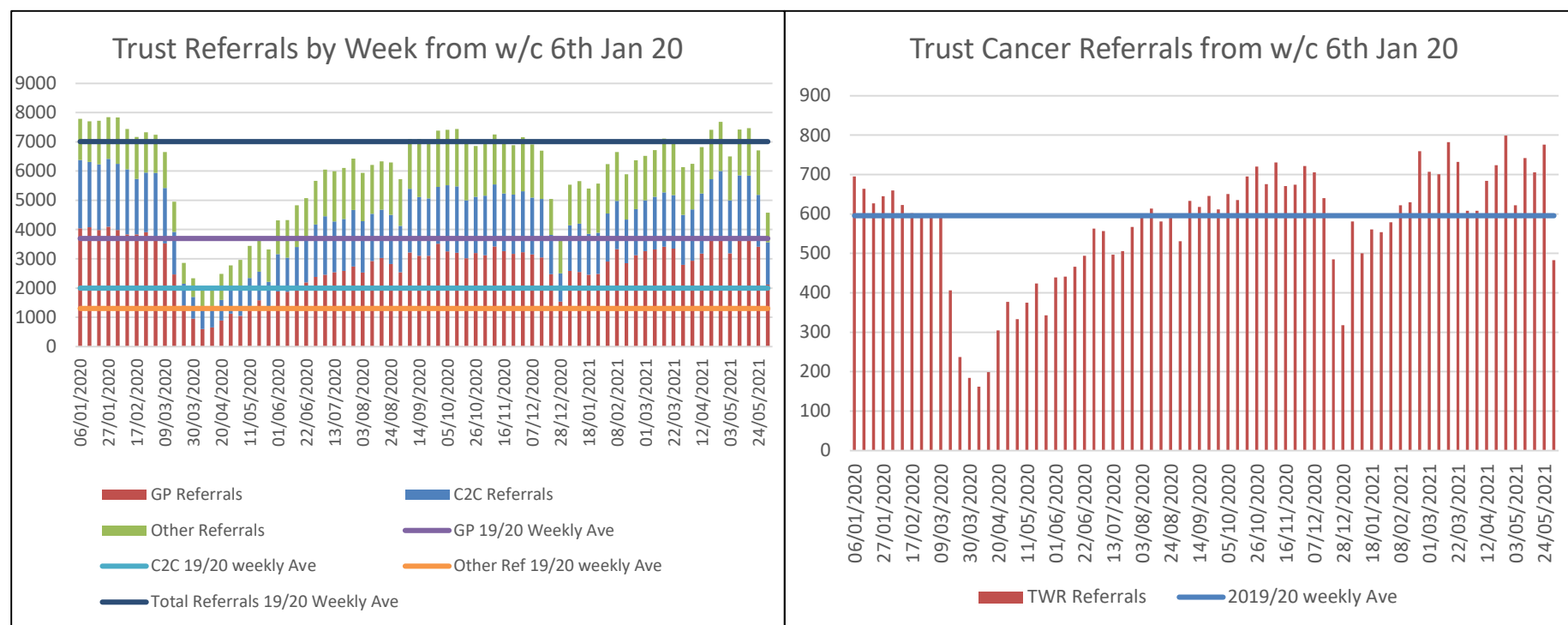
ED Attendances FHFT April 2019- June 2021



- ED attendances Trust wide increased by 7% in May compared to May 2019
  - FPH attendances increased by 10%,
  - WPH attendances increased by 3%
- The increase in ED attendances is predominately in the lower acuity patient cohorts on both sites
- Ambulance conveyances have also increased by 7%
  - FPH conveyances increased 2%
  - WPH conveyances increased 10%
- The conversion rate from attendance to hospital admission has remained low

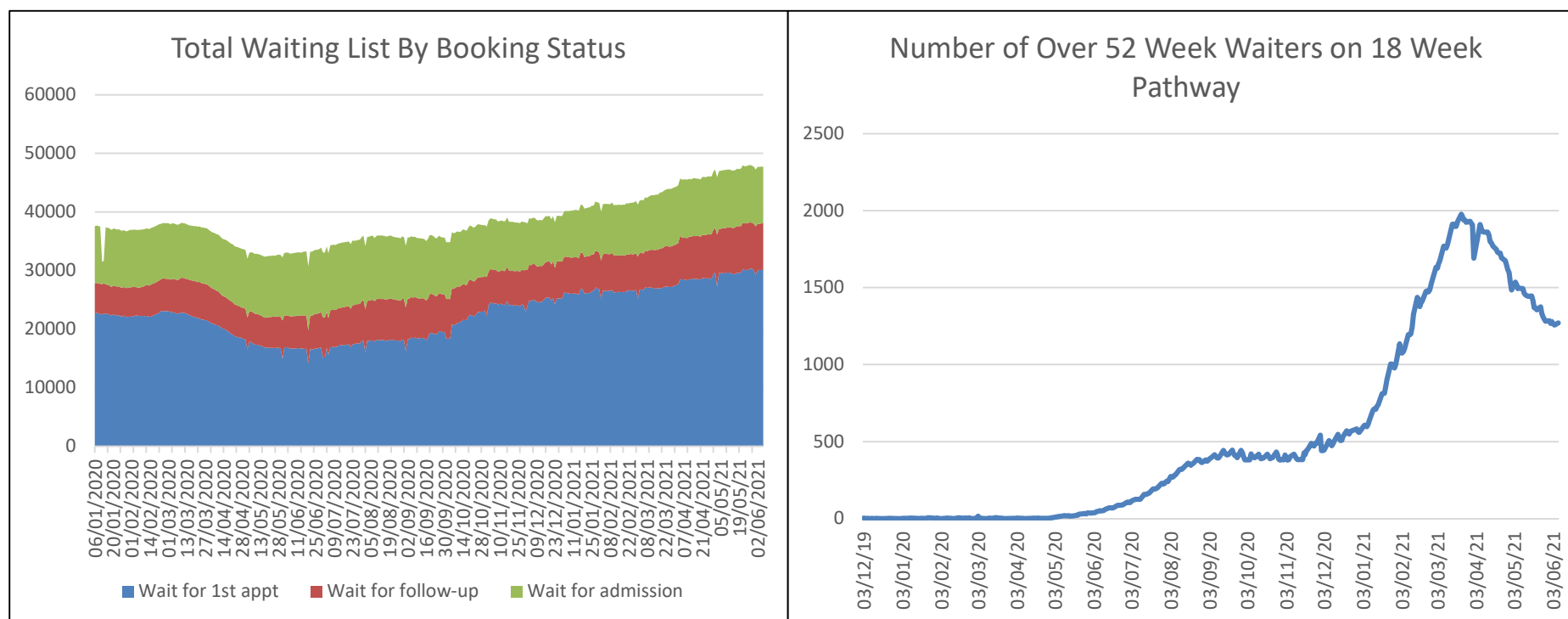
Note that on Mon 14 Jun Frimley Health experienced its highest ED attendance day ever (917) – an increase on the previous record of around 10%

# Elective Referrals



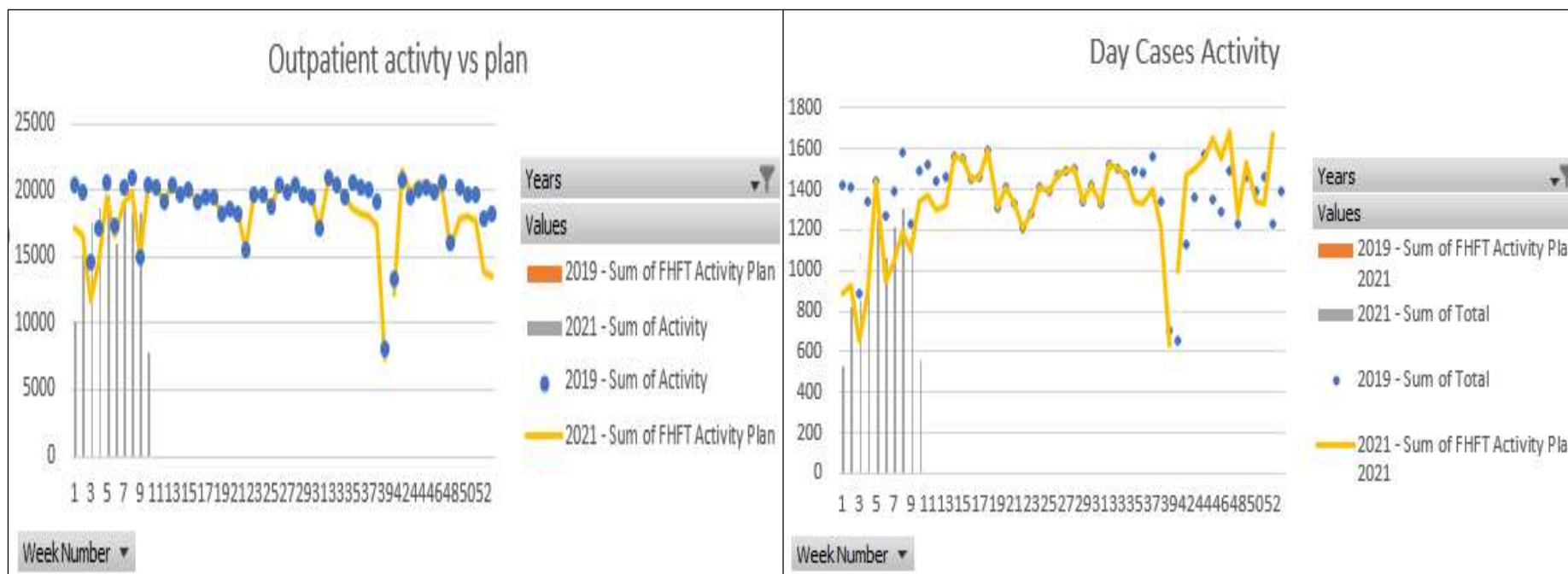
- Referrals dropped significantly in wave 1 and to a lesser extent in wave 2
- GPs and Hospital doctors have been working to review referral pathways and reduce avoidable referrals
- Campaigns to encourage people to present with symptoms of possible cancer have helped to increase referrals after each wave

# Waiting Lists



- The total number of patients on the waiting list has grown with many waiting for their first appointment
- Outpatients and surgery has continued for the most urgent patients
- The number of patients waiting more than a year for treatment has reduced but may rise again: planning is underway to seek additional capacity
- Patients who have had no progress in the last 3 months have been contacted and offered a telephone review
- Early analysis has shown that patients likely to be subject to health inequalities have not been disadvantaged, with more detailed analysis in progress

# Elective Activity



- Good levels of activity are being achieved
- Work is underway to increase activity to above previous levels
- More patients are being seen virtually, freeing up space for more clinics
- All but one of our theatres are now back in use
- Treatments that can now be completed outside operating theatres are being moved to create space as some outpatient areas need to support emergency activity